



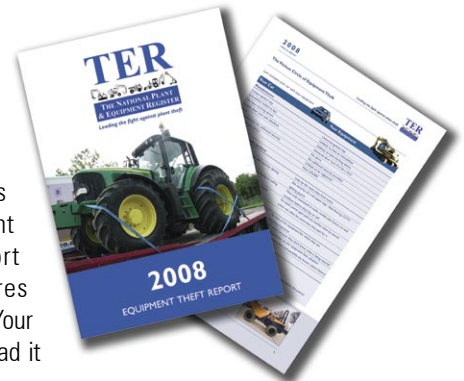
## 'Institutionally indifferent' to equipment theft

Equipment theft is up 2%, the cost of equipment theft is up 11% and yet still all the equipment associated industries appear to be unable to see the herd of elephants in the room.

How can it be that you can start a £50K machine with a Swiss Army knife or a bent nail? Why are there no integrated immobilisers on equipment? Shouldn't tracking devices be fitted as standard? Why is it that sites have the security of a wet paper bag? How come no one checks whether a used item is stolen before they buy, sell, auction, finance or insure it? Why don't insurers know what they are insuring when it comes to plant and equipment? Shouldn't this crime be more of a priority from the Home Office to the police, after all it pumps £1M/week into the coffers of serious organised crime?

Have a look at the chart on page 9 of TER's 2008 Equipment Theft Report which compares Your Car with Your Equipment – read it and weep.

There's still a lot to do to address this crime.



Visit [www.ter-europe.org](http://www.ter-europe.org) and download your copy of the 2008 TER Theft Report today..

## Lottery Roller over

A Bomag BW120AD-4 Roller was stolen from Northallerton on 21<sup>st</sup> April 2008. It was identified by a TER operator at Ritchie Bros Auctioneers at Moerdijk in Holland on 10<sup>th</sup> June having had its identity completely changed.

It was the second Bomag BW120-AD-4 owned by Chippindale Plant which

had been stolen from North Yorkshire, had its identity changed and had been entered in Ritchie Bros auction at Moerdijk and then identified by TER. The modus operandi and the technique used to re-identify the Rollers points to the same gang in both instances.

You would have thought that the criminals would have learnt the first time that their efforts had been futile, yet they tried and failed for a second time. We can but hope that those responsible have now been sacked from their gang for ineptitude?

Bomag  
BW120AD-4  
Roller -  
stolen from  
Northallerton





The Leading Resource for Equipment Registration and Recovery in the UK & Europe

## Poles Apart

On 22<sup>nd</sup> July 2008 a gang of thieves entered a site at Beaconsfield in Buckinghamshire and stole a JCB 3CX Backhoe Loader.

On 24<sup>th</sup> July a police patrol of the Thames Valley Police noticed a JCB 3CX being loaded into a Polish registered curtain-sided semi-trailer by two Polish nationals.



As they inspected the equipment the police officers checked the number plate fixed to the JCB's rear window with double sided sticky tape. The number was false and the officers called TER for assistance. The dashboard had been disrupted where a tracking device removed. The serial number plate was also false.



The TER operator directed the police officer to another number which matched a machine on TER's database and, TER having confirmed that the machine had been stolen just two days before, the officers seized the machine and arrested the two Polish nationals.

## Swedes take Poland by storm

Four massive Volvo Loading Shovels – an L120F, 2 x L90Fs and an L60F - worth a total of around £500,000 were stolen in Merseyside on 1<sup>st</sup> August 2008. Three weeks later TER received information on their location from the Garda's (Irish Police) Stolen Motor Vehicle Section. TER contacted an agent in Poland who passed the information to the Polish National Police who seized the machines. A decision is now awaited on the return or sale of these machines on behalf of the owners, their banks and insurers.

## Check mate

On 11<sup>th</sup> May 2004 a Manitou MT1233S Telescopic Handler was stolen from Linlithgow near Edinburgh. On 23<sup>rd</sup> June 2008 a company near Inverness did a TER Check on this machine when they were considering buying it.



TER matched it as stolen and arranged for the Grampian Police to seize the machine from the location from which it was being sold, at the same time informing the potential purchaser not to go ahead with the transaction.

<b>TER Check Certificate</b>		<b>TER</b> THE NATIONAL PLANT & EQUIPMENT REGISTER
Call TER for verification of this certificate - tel: 01225 464599		
Certificate Number:	070700028	TER Check Type <b>PREMIUM</b>
Make:	JCB	TER Check Result <b>MATCH NOT FOUND</b>
Model:	3CX Excavator	See overview for TER Check Definitions
Serial Number:	6LP3CET380942415	
VIN:	VX53 018	
Year of Manufacture:	2005	
Date of Check:	15.07.07	
<small>A TER Check was conducted on the above item subject to our Terms and Conditions, 110, Bath &amp; West Buildings, Lower Bristol Road, Bath BA2 3JG. Tel: 01225 464599 Fax: 01225 371016 info@ter-europe.org www.ter-europe.org</small>		

When the police had completed their enquiries and released the machine to TER, on behalf of the insurance company owner, TER sold it to the party which had made the TER Check.

## Check it out!

TER has produced a video which explains in detail why you need to be TER Check-ing used equipment before you buy it. You'll see users, the police and TER explain the background and mechanics of the all important TER Check. [View on-line at www.ter.europe.org](http://www.ter.europe.org)

## La Internationale

TER Europe has gone global in the last 12 months. Seven Bobcats taken from the USA and recovered in Lithuania. A JCB JS130 stolen in England and recovered in Cyprus. Quite a lot of kit (9 in total) nicked from England and recovered in Holland. A JCB 3CX taken from Essex sold through Ireland and recovered in the south of France. A Merlo telehandler swiped from Italy reappeared in England. Four Volvo loading shovels stolen in England and recovered in Poland. 'That the thief return his plunder...'



## Four English Musketeers fight for freedom

TER identified four stolen machines at Ritchie Bros Auctioneers in Moerdijk in June 2008: a Kubota U45-3 excavator stolen from London on 7<sup>th</sup> December 2007, a Takeuchi TB016 excavator stolen from Surrey on 20<sup>th</sup> February 2008, a Bomag BW120AD-4 roller stolen from North Yorkshire on 21<sup>st</sup> April 2008 and a Takeuchi TB014 excavator stolen from Surrey on 6<sup>th</sup> February 2008.

Around £35,000 of stolen equipment. The only machine not to have its identity completely changed was the Kubota.

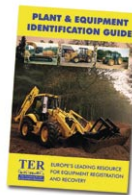


The party placing the machines into the auction, a syndicate, is thought to have purchased these four items of equipment from a Berlin based company called Murphy.



## Free Police training

Ever wondered about the problem of plant theft (by the way, it keeps us awake at night)? Ever thought that you could recognise a stolen item of equipment from the comfort of your patrol car? Ever stood next to an item of equipment and thought 'I wish I knew what to do next'? Ever imagined that you would find out the secrets of TER's £10 toolkit for cracking equipment theft?



If the answer to any of the above is 'No', you're reading the wrong publication. But, if it is 'Yes' then you can unlock the knowledge safe by booking a free TER Police and Law Enforcement Agency briefing. TER staff have already been busy talking to select groups of elite police officers from Stolen Vehicle Squads, Ports Units and Roads Policing Units around the UK.

Book your own briefing by calling TER on 01225 464 599.

## Food for thought



While the Art Loss Register know of women caught stealing art or defrauding shops and galleries, in thirteen years TER have never come across a female equipment thief.

Perhaps, while the cavemen are out nicking equipment, their womenfolk are at home cooking... the books.

## Trailer trash

An insurer provided cover for a trailer. That trailer was stolen. The insurer paid their client's claim and became the proud owner of that trailer – where ever it was. Another client of the same insurer went to market and unknowingly bought that trailer. They insured that trailer with their insurer, which happened to be the same insurer that owned that trailer. That trailer needed a new bit and the new owner took it into their local dealer to get the bit. The dealer checked that trailer with TER and the rest, as they say, is history.

Bit embarrassing though that an insurer cannot tell that they are providing insurance for stolen property, let alone stolen property that they own.



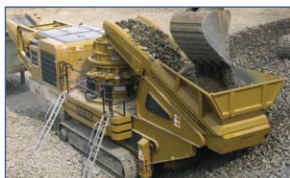
## Getting it across

TER recently gave presentations to the International Association of Auto Theft Investigators (IAATI) in Sydney and to the Insurance Fraud Investigators Group (IFIG) in London.



## Highest value theft of 2007

The most expensive machine stolen in 2007 was an Extec C10 Crusher stolen on 6<sup>th</sup> January 2007 from Rochford in Essex. It was valued at £140,000. Interestingly, on 8<sup>th</sup> September 2008, another Extec C10 Crusher, also valued at £140,000, was stolen from Bradford in West Yorkshire. Quite how any criminal can blatantly lift a jaw-dropping 32 tonne machine, and get away with it, is simply incredible.



## Telescopic theft

The theft of telehandlers shot up by 76% in 2007 to a grand total of 184 units valued at over £5M or around 14% of all equipment theft by value. Why so? Telehandlers are great bits of kit, worth a lot of money and the high spec ones in circulation in the UK market are just too tempting for the criminals to walk past, especially when demand in places like Eastern Europe is providing a great disposal opportunity for them.

## Et tu Brute...

In a year (2007) when the general rise in equipment theft was 2% the theft of JCBs rose by 25% and the theft of Manitous rose by 18%. Both manufacturers use a sticker-based crime reduction scheme which claims to be 'a landmark in plant theft deterrence'.

## £253,165,000!

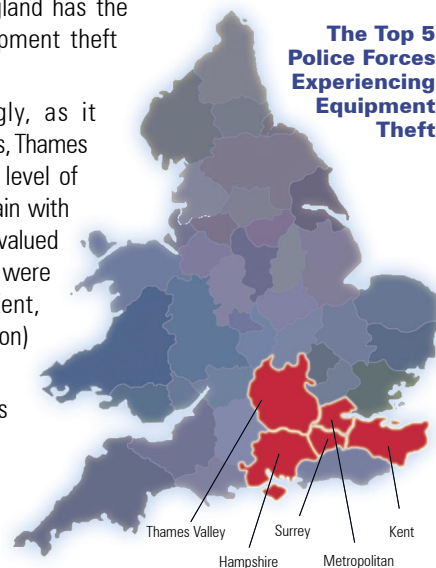
This is the staggering value of the 27,378 stolen items of equipment that have been registered as stolen with TER from 2000-2007. That's £253M – a whopping £¼BN - that has gone directly into the coffers of serious organised criminality in the UK over an eight year period.

## Where it's worst for equipment theft?

The south east of England has the worst record for equipment theft in the UK.

Perhaps unsurprisingly, as it comprises three counties, Thames Valley has the highest level of equipment theft in Britain with 170 higher value thefts valued at £2.3M in 2007. They were closely followed by Kent, Surrey, the Met (London) and Hampshire.

The top five police forces areas constitute 27% of all equipment theft by value and 19% of UK theft by number.





## TER EQUIPMENT CHECKS

**Over £50m of equipment is stolen every year.**

**A TER CHECK can reveal if it is registered as stolen or on finance, starting from only £10.**

**A TER Search Certificate is included as standard with your TER check. It confirms the buyer's check and is vital for the seller's sales and marketing of used equipment.**

**TER Trade Check - £10 per check including certificate. Check the Serial Number of equipment you are buying, auctioning, financing or insuring. (Minimum purchase £30).**

**TER Premium Check - £30 per check including certificate. Extended Search on Make, Model & Serial Number *plus* Outstanding Finance check.**

**Prices exclude VAT. See website for terms and conditions.**

Register Your Fleet, Report Thefts, Check Equipment.

www.ter-europe.org

Tel: 01225 464599



## Sites of interest...



**TER**  
www.ter-europe.org



**CAMWATCH**  
www.camwatch.co.uk



**CUSTODIA**  
www.custodia-systems.co.uk



**MECK LOCK SYSTEM**  
www.mecklocksystem.co.uk